



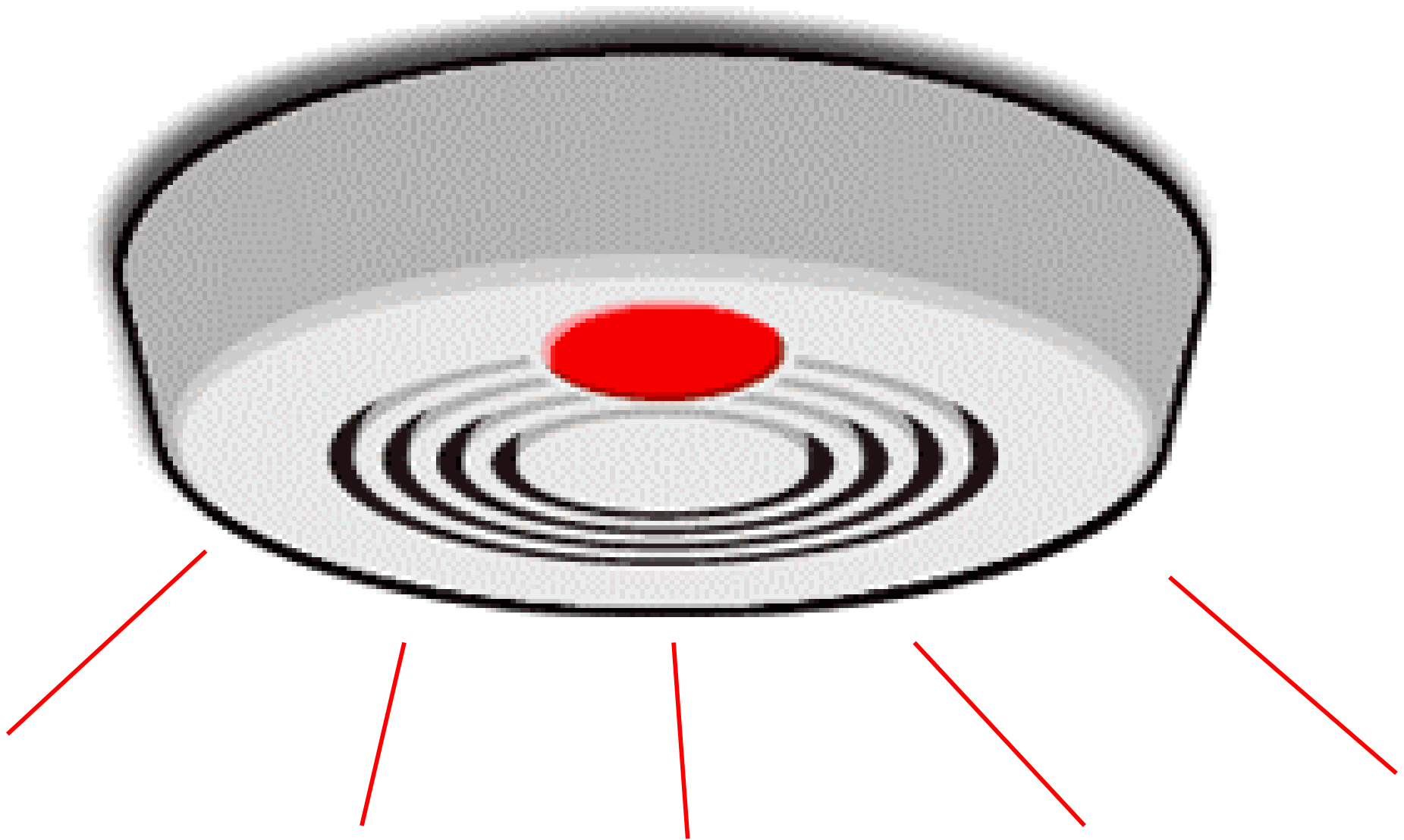
Alarms and escape

Can you get out?

Year 5&6



Check the smoke alarms work



Plan your escape route: this should be your normal route out of your home.

Make sure you all know where to meet.

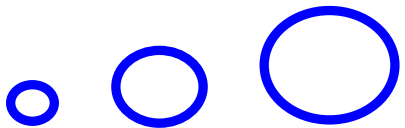


Plan a second escape route, what if your normal way out is blocked?



Can you find
the door keys
quickly?





Does everybody know what to do?

Is anything
blocking your
way?
What if you
were trying to
get out in the
dark?



Could you find
your way out
in the dark?